

Aquamarine Homes

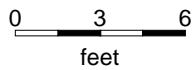
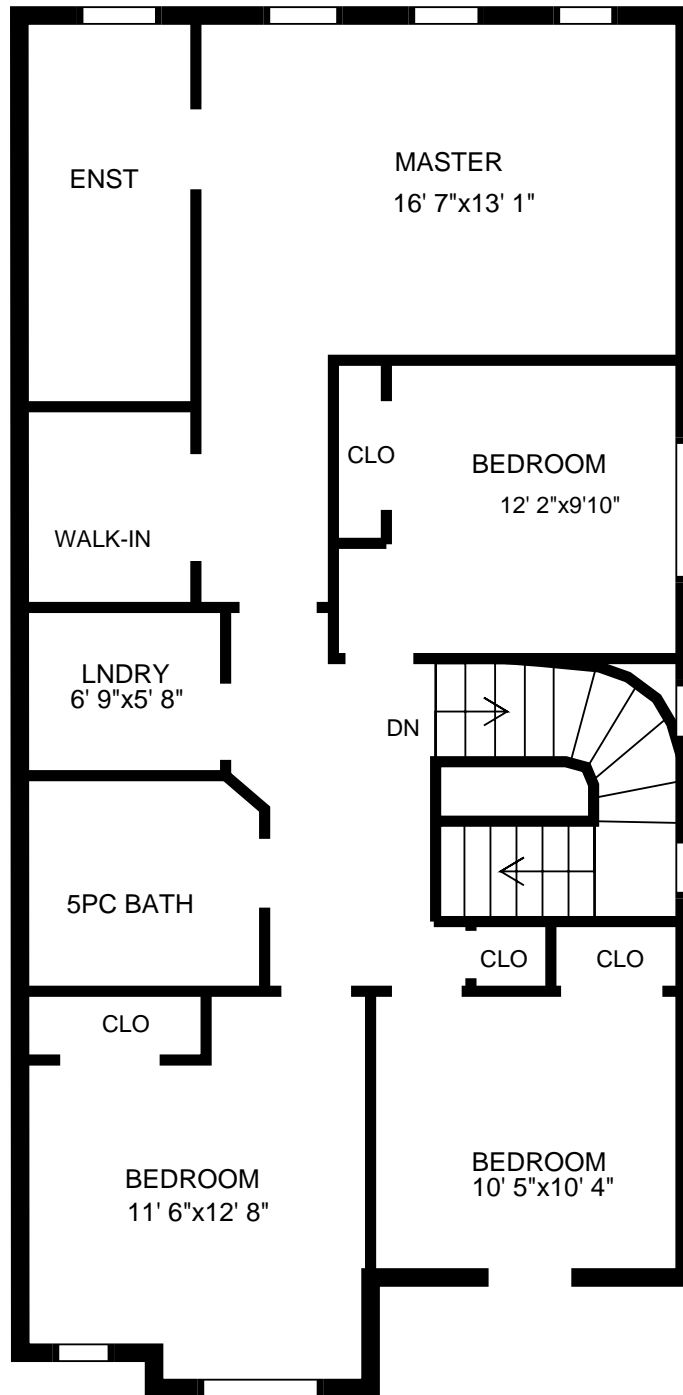
Main floor

PREPARED FOR:

Usable Floor Area (UFA): 940 sq. ft
 Gross Floor Area (GFA): 1060 sq. ft

PREPARED ON:
 May 19, 2015

All rooms dimensions and floor areas must be considered approximate and are subject to independent verification. For method of measurement please see <http://walk-inside.com/measure>



Aquamarine Homes

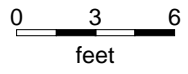
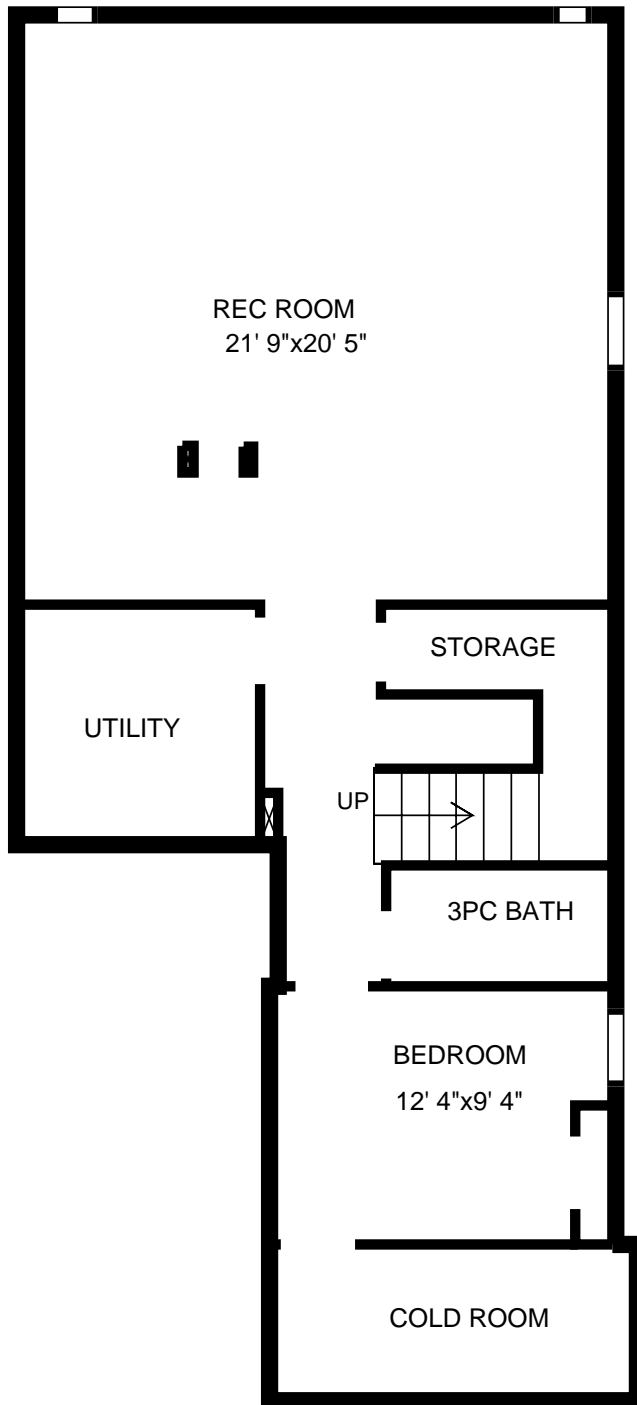
2nd floor

PREPARED FOR:

Usable Floor Area (UFA): 1040 sq. ft
Gross Floor Area (GFA): 1170 sq. ft

PREPARED ON:
May 19, 2015

All rooms dimensions and floor areas must be considered approximate and are subject to independent verification. For method of measurement please see <http://walk-inside.com/measure>



<p>Aquamarine Homes Basement</p>	<p>PREPARED FOR:</p>
<p>Usable Floor Area (UFA): 860 sq. ft Gross Floor Area (GFA):</p>	<p>PREPARED ON: May 19, 2015</p>
<p>All rooms dimensions and floor areas must be considered approximate and are subject to independent verification. For method of measurement please see http://walk-inside.com/measure</p>	